



JILALAN

MONTHLY CIRCULAR OF THE BRISBANE
CATHOLIC BUSHWALKING CLUB
UNDER THE GUIDANCE OF OUR LADY OF THE WAY

Registered by Australia Post

Publication No. QBH 2328



JILALAN

The Club's address is P O Box 151, North Quay, Brisbane 4000 and the telephone contact number is listed in the white pages Telephone Directory under 'B'.

Monthly meetings are held on the third Monday of the month at the Catholic Centre, Edward Street, City, beginning at 7.30pm. To enter the Catholic Centre use the rear entrance. This is reached by entering the grounds of St Stephen's Cathedral via Charlotte Street (entrance nearest Edward St). From Charlotte Street the door is near a white statue. If the door is locked please ring the bell. Visitors are always welcome.

Members of the Committee are:-

CHAPLAIN

<u>PRESIDENT</u>	Russ Nelson	(H)378 5200	(W)224 6413
<u>VICE PRESIDENT</u>	Geoff Egert	(H) 48 4918	(W)223 2712
<u>OUTINGS SECRETARY</u>	Justin Tobin	(H)260 5065	(W)260 5065
<u>GENERAL SECRETARY</u>	Margaret Anderson	(H)398 2187	(W)226 3394
<u>TREASURER</u>	Peter Dore	(H)892 1983	
<u>SOCIAL SECRETARY</u>	Steve Arthur	(H)359 7562	(W)260 1591 ext 326
<u>EDITOR</u>	Barney Tobin	(H)260 5065	(W)205 2405
<u>SAFETY & TRAINING OFFICER</u>	Greg Endicott	(H)351 4092	(W) 33 9611
<u>GENERAL COMMITTEE</u>	Geoff Dower	(H)371 2382	(W)229 5011
	Ken McCarron	(H)349 6046	(W) 33 9382
	Peggy Rutter	(H)359 7517	
<u>EQUIPMENT HIRE</u>	Geoff Dower	(H)371 2382	(W)229 5011

EMERGENCY OFFICER: Where a trip is overdue, parents may telephone the Emergency Officer (as specified for each trip). Please do not ring before 9.00pm at the earliest.

EQUIPMENT OF EVERY TRIP: On every trip run by the Club all walkers, both members and visitors, are expected to take the following minimum equipment:-

torch; first aid kit; parka or raincoat;
and at least $\frac{1}{2}$ litre of water.

ATTENTION!

ALL persons, adult or child, member or visitor, undertake all activities of the Club at their own risk. The Club is not in a position to even state that all care will be taken. It is repeated that all persons undertake all activities entirely at their own risk.

ITALIANSeptember:

7/9	Pilgrimage - Goomburra Valley	BC
15/16	Social - Horse Hiding	
17	Monthly Meeting	
21	Putt putt Golf - Organiser: Geoff Dower	
30	Farorama Point - Leader: Tony Young	
30	Collation Deadline	

October:

5/7	Girraween - Leader: Justin Tobin	TW
	: Barney Tobin	BC
13	Social - Tweed River Cruise	
15	Monthly Meeting	
20/21	Coochin Ck - Glasshouse Mts - Leader ?	ON

November:

4	Mt Frazer - Churchbank Weir	
	Leader: Barney Tobin	DW
3	Collation Deadline	
8/10	Grady's Creek - Leader ?	TW
18	Family BBQ	
19	Monthly Meeting	
24/25	Retreat	

December:

2	Collation Deadline	
1/2	Social - Christmas Party	
7/9	Tyalgum - Right Branch Albert River	
	Leader: ?	TW
17	Monthly Meeting	
26	Christmas Walk - Mt Glorious - Leader ?	DW

Legend:

TW	Throughwalk	BC	Basecamp
ON	Overnighter	DW	Daywalk

* * * * *

JILALANPAST OUTINGS

MT BARNEY MASS - Overnighter - 14/15 August
Leader: Tony Young

The show holiday provided us once again with the chance to continue one of the Club's strongest traditions - Mass on Mt Barney - The Mecca. Mass this year was said by Fr McNally of the Franciscans at Kedron.

People left the Cathedral on Tuesday night to camp at Yellow Pinch; J.C. meeting us down there. Wednesday morning, blue skies and the arrival of the Jan-mobile with the other four members and mascot. With John Carter, Tony Wood and Gary Logan leaving early for their assault on the summit of West Peak via Savages - a rather roundabout route to Mass. The rest of the party began their walk at about 8.30 with Russ leading a few up Bushwalkers Ridge including Fr McNally. The major assault was via South-East, an open, sometimes exposed ridge allowing us good views of the surrounding countryside, with some new members finding it a little difficult but persevering just the same to be rewarded with great views off East Peak. At 2.30 the Mass began at the chapel, with Fr McNally saying "It's just as well Mass isn't this difficult to get to on Sunday". But Sunday Mass isn't said in such peaceful surroundings in a chapel God built himself, allowing us to see the incredible beauty stretching out before us. Here was a rare chance to allow the bushwalker to join the spiritual part of us.

Fr McNally - Thank you very much for giving us this chance by saying Mass for us. We hope you enjoyed the trip to Mt Barney.

Lunch was in the saddle at the Uni Hut site before heading down via Peasants, some coming out after dark, but I'm sure everyone enjoyed themselves.

To everyone - thank you very much.

MT SAMSON - Daywalk - 26 August 1984
Leader: Russ Nelson

Sixteen walkers departed Brisbane at the usual time. Because of the closeness of Mt Samson, we stopped at the Closeburn Markets for half an hour. There we were able to inspect a great variety of crafts and appetising foods.

The walk itself began at 10am with a climb through a banana plantation and then a direct (steep) climb to the top of the main ridge and morning tea. From there it was relatively level with excellent views of the Pine River, Bribie Island and Moreton Island, Deception Bay and the northern suburbs of Brisbane. Along the top we met the local resident with her blind dog. At 12 noon we began the final ascent to the top. The worst part was trying to avoid the scunge. This was not too difficult and those in the front reached the top before 1.00pm while the tail got in at 1.30pm. On top we had a leisurely lunch and our descent proved to be much quicker, except for three people who took a detour. Thanks to all who came.

COMING OUTINGS

PANORAMA POINT - Daywalk

Date : 30 September 1984

Leader : Tony Young

Cost : \$8.00

Emergency Officer: Janine Lucas - Ph 343 2365

Location : Scenic Rim, East of Cunningham's Gap

Panorama - continuous passing scene - unbroken view of surrounding region.

Panorama Point, jutting out from the Scenic Rim, gives us some of the best views from anywhere along it; and when we see the dictionary meaning of 'panorama', its name is very apt.

The walk follows a long open ridge. Although steep, it should be within everyone's capability. Views are attained all the way up before reaching Lower Panorama Point for those incredible views of the Scenic Rim and surrounding valley. A short walk to Panorama Point for lunch and more camera-catching scenery, before following the ridge back to the cars. Two litres of water should be carried.

Nominate to Tony at the meeting for a very good daywalk.

GIRRAWEE NATIONAL PARK

Date : 5/7 October 1984

Leader : Throughwalk - Justin Tobin Ph 260 5065

: Basecamp - Barney Tobin Ph 260 5065

Cost : \$12.00

Emergency Officer: Ken McCarron - Ph 349 6046

Time : 7.00pm N.B.

Location : Wyberba outside Stanthorpe - NSW/QLD Border

Girraween - Place of Wildflowers.

Well, spring is here and the wildflowers are out, and at this time of the year Girraween should be full of them, nestled in amongst the rocks of this granite National Park.

Throughwalk:

Normally a basecamping area for the Club, this walk allows us to carry our packs around the main features of the Park. Saturday morning will involve a short car shuffle, before following the track to the Underground River. Here the creek disappears under granite rock for a short distance. Then across to the Aztec Temple - a series of rocky granite boulders from where we can see Bald Rock, our intended lunch spot. Off Aztec Temple and across country to the NSW border and Bald Rock for lunch, dropping packs here to explore Bald Rock - 1277 metres. A short 15 minute climb to incredible views of our main walking area. From here we will follow the border and an old four wheel drive track to our camp spot at South Bald Rock; hoping to reach here with enough time and daylight left to pitch camp and explore the rock. Although not as high as Bald Rock, its surface area is definitely bigger and split in two. A good chance to see the changing faces of the different granite slabs. (Con't)

Saturday Night - The stars are out - a Full Moon shining, you have just finished tea. Now after carrying a pack all day, here you are in the middle of nowhere just relaxing, telling tales around the camp fire, probably singing a song or two. It's magic. There's no better place to be on a Saturday night than out in the bush.

Sunday morning on Sth Bald Rock if it hasn't been done already before following a four wheel drive track out to West and Middle Bald Rock before going across country to the picnic spot at the base of Mt Norman for smoko. From here we follow the track system to Mt Norman for lunch. Here the more adventurous can climb the highest peak in the Park, 1267M. The Eye of the Needle can also be explored. Following the graded track system to Wombat Cave and then out to Castle Rock camping ground to complete what should be an interesting and enjoyable walk.

Two litres of water should be carried. Saturday night could be cold, so please allow for this, as well as the different types of terrain covered - graded track, four wheel drive track, swampy marshy ground, low scrub, granite.

Please, if you have any queries, see Justin at the meeting or phone him at home.

Basecamp:

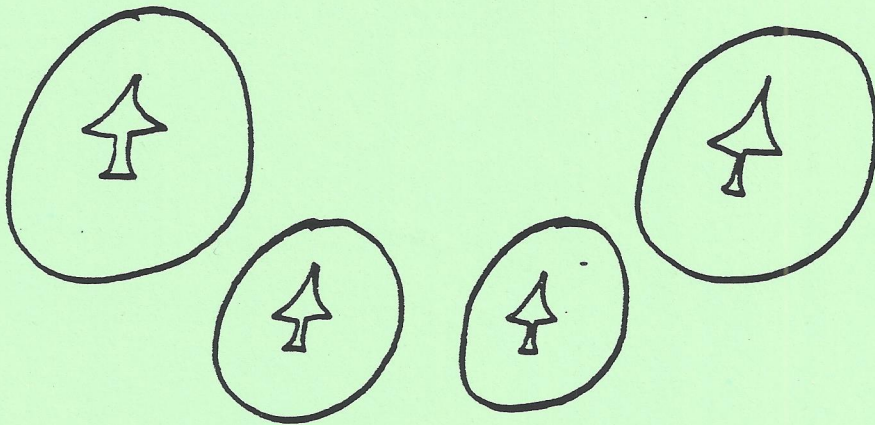
For those newer walkers and visitors wishing to share the delights and panorama of Girraween but unable to carry a pack, Barney has a basecamp sure to satisfy your itchy foot and wandering camera. With a network of graded tracks extending to the main features of the Park over average and medium terrain, he is sure to have an interesting and enjoyable walking week-end for you.

To the daywalkers in the Club, here is your chance to do two full day walks with the added luxury of camping out, cooking tea and yarning around the campfire. The heart of the bushwalking Club is the bush. Hopefully you'll find it this weekend.

* * * * *

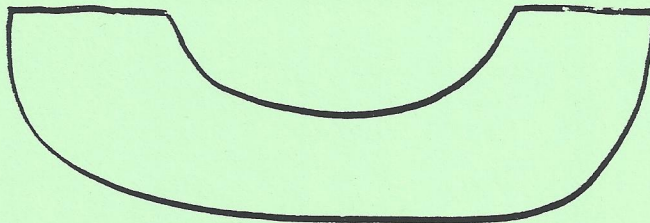
In the October Jilalan, a membership list will be printed, stating your name, address, home/work phone numbers. If anybody has any objections to his or her address and phone numbers appearing, please tell me at the meeting or ring me on 260 5065.

Barney Tobin

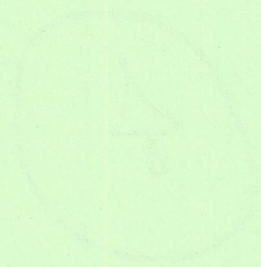


HOW ABOUT A TRIP TO THE POKIES

SATURDAY OCT 13th
DEPART 2pm BY BUS
LAUNCH 4pm TWEED RIVER CRUISE
DANCE
TALK
DRINK
THERE 6.30pm DINE
TALK
DRINK
POKE
DRINK
LEAVE 11.30pm



TALK TO THE ENTERTAINMENT DIRECTOR



THE UNIVERSITY OF CHICAGO

PHYSICS

DEPARTMENT OF PHYSICS

CHICAGO, ILLINOIS

OFFICE OF THE DEAN

PHYSICS BUILDING

5720 S. DICKINSON AVE.

CHICAGO, ILL. 60637

TEL. 373-5400

TELETYPE 373-5400

CABLE 373-5400

POSTAL ADDRESS

PHYSICS DEPARTMENT

5720 S. DICKINSON AVE.

CHICAGO, ILL. 60637

U.S. MAIL PERMIT NO. 1000

CHICAGO, ILL.

POSTAGE WILL BE PAID BY ADDRESSEE

NO POSTAGE NECESSARY IF MAILED IN THE UNITED STATES

POSTAGE WILL BE PAID BY ADDRESSEE

NO POSTAGE NECESSARY IF MAILED IN THE UNITED STATES

POSTAGE WILL BE PAID BY ADDRESSEE

NO POSTAGE NECESSARY IF MAILED IN THE UNITED STATES

POSTAGE WILL BE PAID BY ADDRESSEE

NO POSTAGE NECESSARY IF MAILED IN THE UNITED STATES

POSTAGE WILL BE PAID BY ADDRESSEE

NO POSTAGE NECESSARY IF MAILED IN THE UNITED STATES

POSTAGE WILL BE PAID BY ADDRESSEE

NO POSTAGE NECESSARY IF MAILED IN THE UNITED STATES

POSTAGE WILL BE PAID BY ADDRESSEE

NO POSTAGE NECESSARY IF MAILED IN THE UNITED STATES

JILALANF.M.R. REPORTFeature Night

At 7.00pm Tuesday 25 September there will be a stretcher training night at Mt Cootha. This exercise is to train us in using the gear that we have for night operations. We will be meeting at 7pm at Mt Cootha Botanical Gardens. See me for more information at the next meeting.

Ken McCarron
FMR Delegate

EQUIPMENT HIRE

The Club has a number of back-packs available for hire at a nominal cost of \$2.00 for a full weekend. These packs are designed for use on overnight and throughwalks, and will prove useful for anyone who is keen to go on some of the Club's outings, but doesn't have all the necessary gear.

For anyone interested in hiring some equipment, contact Geoff Dower on (H) 371 2382 or (W) 229 5011, or see me at the next monthly meeting. If I'm not home when you ring, just leave a message.

PAST SOCIALSRural Youth Ball

On the evening of Saturday, 11th August, 34 members and friends of the Club gathered at the Greek Community Centre for a night of dancing, fun and more fun. It was quite amazing to see the boys looking rather dashing in their evening finery. The first prize for the evening dress went to Steve Arthur who shocked us all by coming in a suit complete with flower and all (nice one Steve), while it was nice to see all the girls out of their walking gear and into finery. The music was supplied by two bands alternately, so live music was available all night. There was plenty of dancing throughout the night, with Smiley showing us all how it was done (nice one Smiley).

I know everybody enjoyed themselves, and it's a pity the night finished so early at 2.00am.

Thanks to all who came.

JILALANCar Rally - 18 August 1984

It was a bright Saturday morn when four keen champion drivers, all top rating females, drove into Stafford shopping centre to uncover what Steve Arthur promised them - equally top specimens from the other species ... nice try anyway Steve!

Clues were given to the navigators and the teams drove off. All navigators were of equal rating - all male. There were four female drivers and one male driver, but alas, he did not make the finishing line.

The car rally was not difficult, but it was quite tricky to the point of being painful trying to interpret clues the same way as Steve Arthur would, eg the answer to one question in section 1 was Standford St, Mt Gravatt; but as Steve isn't inclined to travel on the south side, one had to guess the name of a street closest to the word Standford, that is on the northside. If you go the pub, have a cuppla pots, mate, and bring on an ocker drawl, you'll get the answer - Samford.

Next step, checkpoint 1. Ferny Grove Tavern. Steve had been there for 2 hours. With cheeks a pretty rose shade, he smilingly handed us stage 2. The competitive field had quickly dropped. The Margaret and Geoff team and Therese and Greg team were neck to neck. Off we sped to where a great guy worked - was it by any coincidence that this was an army camp?

Section 2 was where we weeded the novices from experienced trail hunters. The novices tried and tried to take short cuts, eg hoping to find the answers in the newspaper, ringing them. A hint for next year's rally drivers - cheating certainly pays off (Greg and Therese can vouch for that), but you must do it in the easy sections; cheating in later sections is risky.

Checkpoint 2 was ... Ferny Grove Tavern. Steve, now sporting diluted eyeballs, was hap-hap-happy to see us! Teams gradually pulled in and decided it was time for a bar-be-que. Section 3 had to wait for another day; Steve would never have made it. As Tony Wood and co failed to turn up by 2pm, other teams decided to go to Greg's place for lunch.

Steve did have a bad start for the day. Thirty people nominated for the car rally, so he made an extra special effort to make the car rally a light-hearted and fun day. Unfortunately, only 11 people rallied to show their appreciation. As luck would have it, Steve won an enormous meat tray at the Tavern. We were all pleased to see a (slot in one of your favourite words Steve) win. All those that made the small effort to roll up, had a great day.

Greg and myself toasted the Club with the champagne we received for first prize.

Therese Lacey

JILALANVideo Night - 24 August 1984

Well folks, by the number of people we had at the recent video night, it is apparent that the video boom is over, with most people obviously thinking, I've been there and done that. But for the people that did come, it was a most enjoyable night, with Steve providing a choice of 4 movies which started off with Merry Xmas Mr Lawrence. The Iron Cross, after which most people departed for home since it was quite close to midnight if not later. While the diehards stayed on for another video - King Frat - which tried to take off Animal House. In between watching the videos people got stuck into supper which was provided mostly by themselves, with Mrs Arthur supplying hot food. To those who didn't come, you missed out on a great night; if not from the videos, most definitely from the eating side. So thanks to all those who came and provided the good company, the good food, but alas not the good wine.

Approximately \$30-33.00 was raised by the night.

Steve Arthur

COMING SOCIALSTweed River Cruise

Well folks, hot off the press last month was the news that the Tweed River Cruise was in the planning stages. It is now definite the Club will be running this trip on the 13th October.

We will be meeting at Palmdale Shopping Centre across from the Garden City Shopping Centre at Mt Gravatt at 1.30pm on 13 October to enable us to depart at 2.00pm sharp. There is plenty of parking available here to leave the cars. For those of you with transport problems getting to Mt Gravatt, please see me at the next meeting.

Barney Tobin

Sporting Social - Putt Putt Golf

This will be the night for swingers to show their true style (with golf clubs only). The fun will begin at 7.00pm on Friday 21 September at the Mt Gravatt Putt Putt course, which is located along Logan Road near the Big Top Shopping Centre.

A group discount is available, reducing the cost to \$2.50 per head for the full 36 holes of golf. This cost includes hire of putters.

As this night is for everyone - from the budding Greg Normans to those who have yet to handle a golf club, come along, play the game, and have plenty of fun. You never know but you may even score a hole-in-one!

Afterwards we will dine at a local coffee shop for a late night cuppa. Please nominate to me at the September monthly meeting.

Geoff Dower

JILALANBUSH BIRDS

Well folks, Bush Birds certainly proved "A bird on the court is better than two in the bush". Last Wednesday the Bush Birds scored a mighty victory over the undefeated Cobbity Farm team. The score was 6-4 at half time Bush Birds' favour, and they managed to hold on to run out winners 13-11 at full time.

It was a well deserved win, especially after a draw and a loss in injury time the previous two weeks. Well done to the girls who did play that night - Sandra, Margaret, Imelda, Sharyn, Elizabeth, Teresa and Anne.

The Bush Birds wish to thank all the people who supported the raffle at the last meeting.

Below is a list of the playing times for the rest of the season:

19 September - 9.00pm
26 September - 6.30pm
3 October - 9.00pm
10 October - 6.30pm

17 October - 6.30pm
24 October - Bye
31 October - 8.10pm
7 November - 9.00pm

GOOD NEWS FROM NORFOLK ISLAND

From Jean Edgecombe in NSW, co-author of the new book, "Discovering Norfolk Island".
Printed in A.C.F. Newsletter (May)

Norfolk Island is a very small, very beautiful territory of Australia, 1,676km east-north-east of Sydney in the South Pacific. It has a history - and records - of white settlement only a few weeks shorter than that of Sydney itself.

With an area of 3,455 hectares, Norfolk Island consists chiefly of a plateau 60 to 70 metres above sea level bordered by precipitous cliffs of volcanic rock. Across the mid north of the Island, between seas of farmland either side, rises the high lookout of the Mt. Pitt Reserve, formerly a major centre of volcanic activity, now a precious remnant of multi-coloured green forest with Norfolk Island Pines rising above the canopy, ferns and tree ferns along the wooded ferny valleys. This is the habitat of rare endemic species of plants and populations of, in some cases, endangered wildlife.

Since the late 'sixties, local and mainland conservation societies (including ACF) and scientists have been pressing for dedication of the area as a national park under the Australian National Parks and Wildlife Service Act.

The first major park proposal was outlined in the ACF Special Publication No 1, The Conservation of Norfolk Island, first published in 1968.

After inaction and controversy for the following fourteen years, a proposed Plan of Management was circulated, with scores of objections to various aspects being raised.

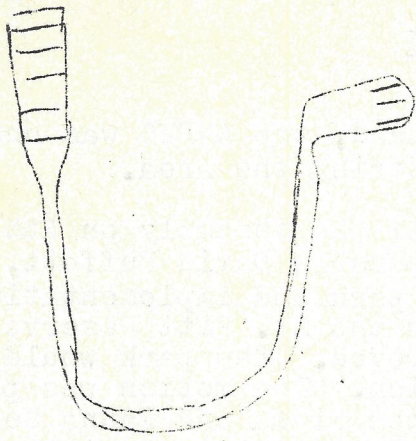
(Con't)

JILALAN

In the meantime, as it was Crown Land, the ANPWS was unable to spend money protecting and restoring the area.

Now the good news! At a meeting of the Assembly on 4th April, the Chief Minister, the Honorable David Buffett, moved that creation of a national park and implementation of the Plan of Management for both the Mt. Pitt Reserve and the Botanic Gardens should be approved. The park would be proclaimed under Federal legislation. The motion was passed, 6 to 2. (Owen and Beryl Evans of the Flora and Fauna Society and members of the Norfolk Island Conservation Society had done a good job in helping members of the Assembly to understand the problems and what was at stake - including the enormous importance to the island, to tourism and to science.) The area designated is 13% of the total area of the Island.

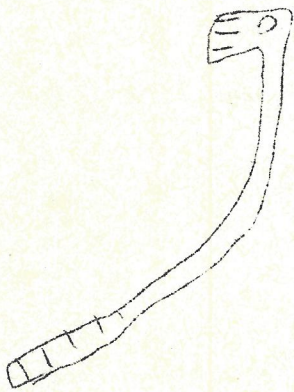
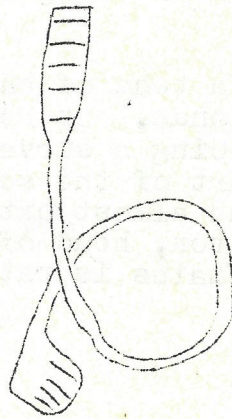
At the moment, a team of entomologists is working on Norfolk and Phillip Islands. Dr Peter Coyne of ANPWS with three assistants is doing a survey of the proposed national park area and, as part of the scheme, an artificial breeding programme of the almost extinct Green Parrots is under way. Professor Ovington, head of ANPWS, has been on the island, and all that remains is ratification by the Australian Government.



21 SEPT

PUTT

PUTT



SEE

PAGE

