



# JILALAN

MONTHLY CIRCULAR OF THE BRISBANE  
CATHOLIC BUSHWALKING CLUB

UNDER THE GUIDANCE OF OUR LADY OF THE WAY

Registered by Australia Post

Publication No. QBH 2328

1 - APR 1986



## JILALAN

The Club's address is Post Office Box 151, North Quay, Brisbane, 4000, and the telephone contact number is listed in the White Pages Telephone Directory under 'B'.

Monthly meetings are held on the third Monday of the month at the Catholic Centre, Edward Street, City, beginning at 7.30pm. To enter the Catholic Centre, use the rear entrance. This is reached by entering the grounds of St. Stephen's Cathedral via Charlotte Street (entrance nearest Edward Street). From Charlotte Street, the door is near a white statue. If the door is locked, please ring the bell. Visitors are always welcome.

Members of the Committee are:-

### CHAPLAIN

PRESIDENT	Tim Apelt	(H) 343 4625	(W) 229 8318
VICE PRESIDENT	John Carter	(076) 66 1133	
OUTINGS SECRETARY	John Bigg	354 3906	
GENERAL SECRETARY	Anne Hayes	345 2936	
TREASURER	Cathy McHugh	(H) 379 4447	(W) 221 1977
SOCIAL SECRETARY	Ken McCarron	(W) 229 6500	
EDITOR			
SAFETY & TRAINING OFFICER	Ken McCarron	(W) 229 6500	
GENERAL COMMITTEE	Steve Arthur	(W) 260 1591	(H) 38 1258
EQUIPMENT HIRE	Ken McCarron	(W) 229 6500	

EMERGENCY OFFICER: Where a trip is overdue, parents may telephone the Emergency Officer (as specified for each trip). Please do not ring before 9.00pm at the earliest.

EQUIPMENT OF EVERY TRIP: On every trip run by the Club, all walkers - both members and visitors - are expected to take the following minimum equipment:-

torch; first aid kit; parka or raincoat;  
and at least  $\frac{1}{2}$  litre of water.

ATTENTION: ALL persons, adult or child, member or visitor, undertake ALL activities of the Club at their own risk. The Club is not in a position to even state that all care will be taken. It is repeated that all persons undertake all activities entirely at their own risk.

April 1986

JILALAN

Page 2

APRIL:

11	Mt Mitchell - Halley's Comet (Leader: Greg Endicott)	NW
20	Binna Burra - Shipstern (Leader: Nathan Tobin)	DW
21	Monthly Meeting	
22	FMR Feature Night - Stretcher Use	
24/27	Mts. Maroon/Barney/May (Leader: John Carter)	TW
27	Mt Maroon (Leader: Nathan Tobin)	DW

MAY:

2/5	New England National Park (Leader: Cathy McHugh)	BC
9	Annual Mass and Dinner	
11	Mt Glorious (Leader: Yolanda Apelt)	$\frac{1}{2}$ DW
11	FMR Training Day at Glennies Pulpit	
19	Monthly Meeting	
25	Mt Moon (Leader: Geoffrey Egert)	DW
31/1	Federation Clean-Up	

JUNE:

6/9	Cunningham's Gap - Teviot Gap (Leader: Ken McCarron)	TW
16	Monthly Meeting	
21/22	Mt Gillies	DW
24	FMR Feature Night - Visit to Police Operations Centre	

JULY:

4/6	Acacia Plateau	TW
11/13	FMR Weekend	BC
15	Monthly Meeting	
20	Glasshouse Mountains	DW

LEGEND:

TW	Throughwalk	DW	Daywalk
BC	Base Camp	ON	Overnighter
		NW	Nightwalk

# COMING OUTINGS

## MTS. BARNEY-MAROON-MAY - THROUGHWALK

DATE : 24/27th APRIL, 1986  
 LEADER : JOHN CARTER - CONTACT JOHN BIGG 354 3906  
 COST : \$12.00  
 MEETING TIME : 7.15pm THURSDAY 24th, BEHIND CATHEDRAL  
 EMERGENCY OFFICER: V. CARTER - 356 4931

This ANZAC Day weekend gives us an opportunity to walk three of the major peaks in this rugged National Park. Definitely a top throughwalk. We have not been allowed to cross some private property which has altered our planned route slightly.

Climbing the northern ridge of Mt Maroon onto its heathy summit, we will drop off the south-west ridge. This ridge connects with Mt May via a low saddle. Great views from both peaks. Onto Graces Hut for water and climb a short ridge to Monsterrat Lookout to camp. Imagine sunrise on Mt Barney from here!

In the morning, back into Barney Creek and down to Midget's Ridge. Climbing this for most of the day we will arrive on West Peak and will probably camp here. On Day 3 (Sunday) down to Rum Jungle, drop packs and climb East Peak. Then it's down the gorge into Barney Creek for lunch and rock hop to the hut and out to the car park.

It is a long walk over three days so you should have done some T.W. before. However, there are few difficult sections - talk to John Bigg or Pat. Carry 3 litres of water, a hat and the usual gear. Nominations will be limited to 10 persons and we leave on the Thursday night at 7.15 sharp as we need to do a car shuffle. This is good training for the Cunningham's Gap to Teviot Gap trip.

John Carter

## MT MAROON - DAYWALK

Location: near Rathdowney

DATE : 27th APRIL, 1986  
 LEADER : NATHAN TOBIN  
 COST : \$9.00  
 MEETING TIME : 7.45am BEHIND THE CATHEDRAL IN CHARLOTTE ST.  
 EMERGENCY OFFICER: JOHN BIGG - 354 3906

For those newer walkers and those who don't want to do a three day Throughwalk, I will be leading a walk to Maroon on Sunday, 27th April.

We will drive down to the water reserve, just near the bottom of Maroon where we will park the cars. We will then head around the water pond (for those of you who believe they're God, you are welcome to walk across the water). It is an easy walk up to the saddle with a slight

/ rock

April 1986

JILALAN

Page 4

Mt Maroon Daywalk cont.:

rock scramble up to the top of Maroon. Once on top, great views can be seen - the Main Range Group, Barney, Flinders Peak, Mt May, Knapps Peak and Maroon Dam. A great walk and truly worth the effort.

If you want to come on this walk, please nominate to me at the meeting.

Remember, it's easy. Also bring 2 litres of water, sun hat, sun cream and wear a shirt with a collar.

Nathan Tobin

NEW ENGLAND NATIONAL PARK - BASECAMP      Location: East of Armidale

DATE : 2/5th MAY  
LEADER : CATHY MC HUGH (379 4447)  
COST : \$28.00  
MEETING TIME : 7.30pm BEHIND CATHEDRAL (we need to leave on time)  
EMERGENCY OFFICER: TIM APELT (343 4625)

On Friday night we will drive down to Glencoe and camp the night here. Saturday after breakfast we will drive through Armidale and call into see the Wallomombi Falls. After a look around we shall then drive to the National Park. Saturday afternoon we shall do the graded track system around the park.

Sunday morning we shall do a long daywalk down a ridge through various types of vegetation. Sunday night will be spent at Cathedral Rock National Park. Monday morning before we come home we shall do a short 3 hour walk. This is an easy basecamp and a golden opportunity to see a part of Australia that we don't normally visit. Please remember to bring a jumper as sometimes it is very cold down there. Also, don't forget a hat and your camera.

Cathy Mc Hugh

MT GLORIOUS - 1/2 DAYWALK

DATE : 11th MAY, 1986  
LEADER : YOLANDA APELT  
COST : \$4.00  
MEETING TIME : 1.00pm AT THE BACK OF THE CATHEDRAL  
EMERGENCY OFFICER: Jill Apelt (38 4761)

This is a super easy walk on a graded track. The walk lasts approximately two hours and we'll be seeing Greene's Falls and Cypress Grove. As we will be walking through cool, green rainforest, you may need a jumper. We shall be having Devonshire Tea after the walk and will be back in Brisbane around 6.00pm.

Excellent walk for visitors and beginners and should be a pleasant Sunday afternoon .... so do come along.

Yolanda Apelt

# PAST OUTINGS

LOWER PORTALS-UPPER PORTALS - 7/9th MARCH, 1986

LEADER: TIM APELT

At 6.45pm, Friday night, the phone rings. Expecting a late cancellation, Bryan McMahon informs me that his wife, Val, has to stay home and care for their sick pet sheep - a novel but believable excuse. Two nights later, the real excuse was blatantly clear to anybody who tried to sleep within 100 metres of the aforesaid gentleman. I bet Val slept well.

We walked into the club hut under a perfectly clear, moonless, star-studded sky. Nathan boiled the billy and we all enjoyed a cuppa and the perfect evening. Nathan again proved that the greater the discomfort, the more he enjoys himself. He slept in the open and kept the fire company along with every creature that would walk on, bound over or crawl under a body, sleeping in a sleeping bag which was half a metre too short and 5° too cold.

Saturday came with a clear blue sky and twelve keen walkers ready to depart. (Jonas and Pat were intimidating the leader with go-slow tactics, as usual, but good discipline kept these wayward children in line). The day was perfect for rock hopping and swimming in the cool pools.

Mr. Egert displayed a keen sense of humour by inventing some original practical jokes - like pushing people in the water, splashing them or throwing their oranges in. I have never had a more relaxing day's throughwalking.

At around 3pm, we arrived at the Upper Portals, made camp, swam and started cooking. Special mention must be made of Anne and Pauline's outdoor cooking. It must be seen to be believed as opposed to Cathy McDonnell's singing, which must be heard to be enjoyed or to Greg Endicott's joke which gains nothing with age or repetition.

Sunday morning dawned on the same note (ZZzzzzZZ) as Saturday. Nathan drank left-over tea from the night before and Pat and Jonas were again last up, last ready and last to leave. We headed up the ridge which would take us back to the Lower Portals. Not even Adam's army background had prepared him for the awful pace we set.

Back at the Lower Portals after three hours, we had plenty of time to swim and explore this delightful area while having lunch, after which it was back to the cars and back home through an incredible thunderstorm. Thank God it didn't arrive Saturday.

Thanks to all who came - the first time on throughwalks for Cathy McDonnell, Adam Lilicrap, Bryan McMahon, Paul Hodson, Mario Bono and Jonas Bernatos. Also for the more experienced Pat, Anne, Pauline, Richard, Greg, Geoffrey and Nathan.

Tim Apelt

P.S. Thanks to Yolanda for staying home and doing the washing.

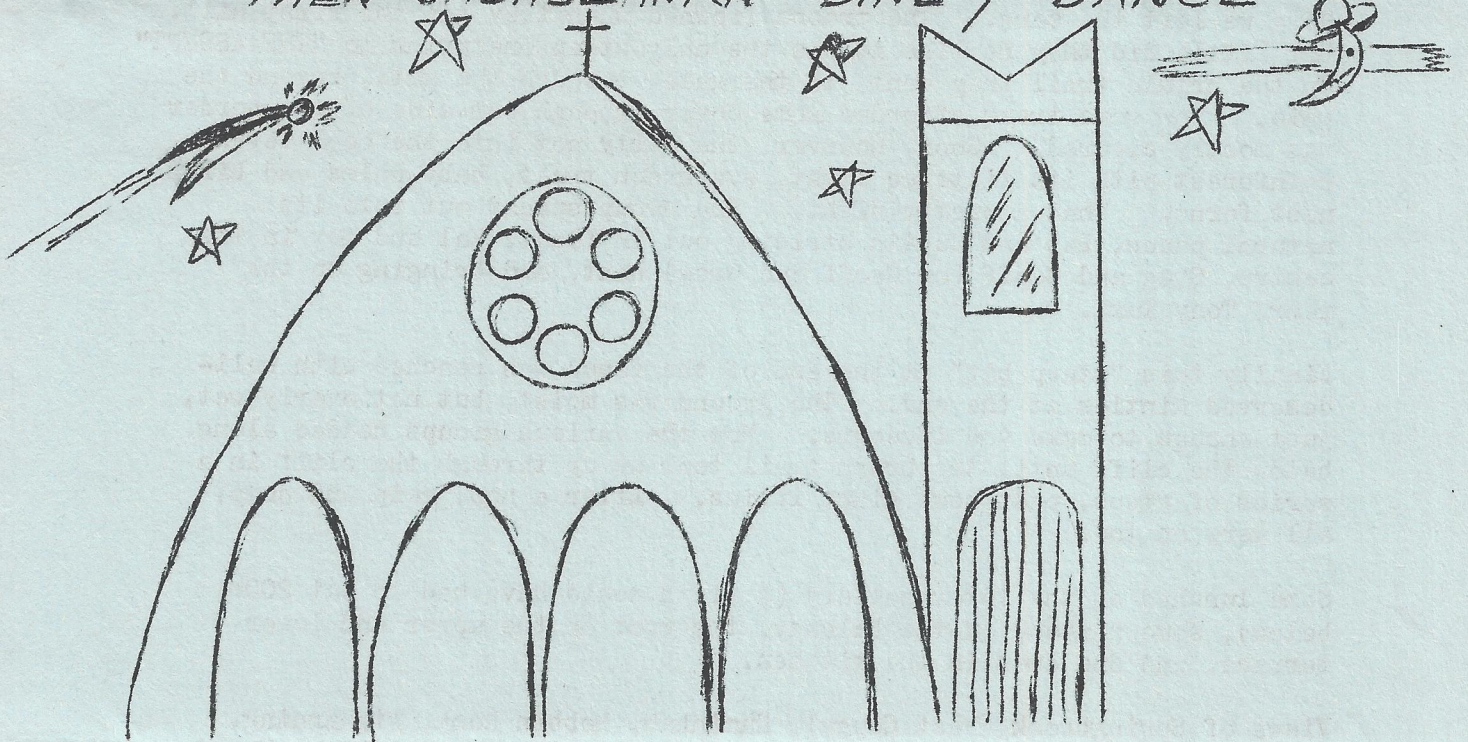
"PLAY IT AGAIN KEN! PLAY IT"

ANNUAL MASS AND DINNER

7 P.M. OLD CATHEDRAL

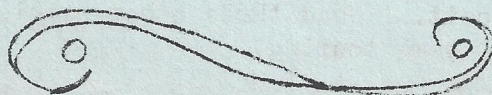
FRIDAY, MAY 9TH

THEN CASABLANKA DINE / DANCE



NOMINATIONS AT THE MEETING  
TO KEN BY THE 5TH MAY  
(PH No. 349 6046)

"OF ALL THE CRUMBY CLUB HUTS AND  
WATERING HOLES IN THIS QUARTER,  
YOU HAD TO CHOOSE THIS ONE TO WALK  
INTO."



April 1986

JILALAN

Page 6

THE COUGALS - DAYWALK - 31.3.86

LEADER: GREG ENDICOTT

The day dawned fine, the temperature mild and the wind low. Twentyfive cheery walkers drove from the Cathedral along the Pacific Highway to the Currumbin turnoff. This creek was followed for some miles, then the Tomewin turnoff was taken. Up, through the banana plantations; up, past the strawberry farm; up, to the border fence, then along to the border gate. Now, just a few short minutes to the Garden of Eden.

Here we left the cars. The troops frowned when they saw the first hill. But little did they realise it was the only steep one prior to "THE ASCENT". Up the bridle trail they went, to the gate, through the gate, beyond the gate. Now some trees afforded some cover, though our side of the border was mostly cleared. Soon, however, the party got into the cool level rainforest with its filtered light, evergreen trees, baby palms and birds nest ferns. What a pretty sight. The group spread out into its natural paces, Pat and Justin striding out in front, Val and Bev in the centre, Greg and Geoff (or Geoff and Greg) next, and bringing up the rear, Tony Taxi.

Finally this "steep bit" at the end of the fence was reached with well-deserved Minties at the end. The ground was moist, but not overly wet, just enough to make you insecure. Now the various groups headed along below the cliff until the brush trail took us up through the cliff in a series of steps, past some giant lilies. After a hop, skip and jump, all were on top.

Some lunched on the lower gallery (a fifth would have had to eat 200m. below), some partook on the balcony, the rest on the upper and lower terrace, and one even in the kitchen.

Views of Springbrook, West Cougal, Numinbah, Mebbin Rock, Mt Warning, Murwillumbah, Tweed Heads, Pages Pinnacle, the cane fields of the Tweed, and the crescent of Currumbin Creek were had by all - with photos to prove it. Views of low rain clouds and approaching squalls were also to be seen so most scampered after our hour's lunch.

The return was the reverse of our coming - up by our feet, back on our bums. For a party of 25, at least ten of whom were newcomers, our pace of two hours up and two hours back, was excellent. Thank you all for coming.

Greg Endicott

\*\*\*\*\* NEW ZEALAND - END OF 1986 \*\*\*\*\*

Anyone interested in a holiday to New Zealand between October and December for four weeks, talk to Greg Endicott. Need three other people. Some walking, some touring.

\*\*\*\*\*

\*\*\*\*\*

## COMING SOCIALS

The next social will be the annual mass and dinner on 9th May. Mass will be at the Old Cathedral at 7.00pm.

We are planning a nice venue for dinner.

Come to the next meeting and hear all about it.

Ken McCarron

P.S. squishy night May 16  
Bairdton 7.30

## PAST SOCIALS

The last social was the annual Federation of Bushwalkers' Bushdance. We had a good roll up from our club but the overall attendance was down. This was good news as there was room to move in the hall. The four hours that the band played for seemed to go very quickly. There was an abundance of supper and friendly people.

I'd like to thank all those who came along and especially those people who baked some cakes. Also to the organizers of the Federation, a BIG thanks for such a good dance.

Ken McCarron

## PRESIDENT'S REPORT

As bushwalkers, we are often walking in or next to streams and often camp next to them. We must take particular care not to pollute these waterways in any way. This entails introducing no foreign material to the water, be it soap, shampoo, detergent, oils, etc. No plates or pans should be washed in the stream and teeth should be cleaned well away from the water.

On throughwalks, daily ablutions should be performed at least 50m. away from streams to prevent any chance of human faeces contaminating the water.

Take care and enjoy walking in the cooler weather.

Tim Apelt

April 1986.

JILALAN

Page 8

F.M.I.R.

SAFETY & TRAINING DAY - 23rd MARCH, 1986:

The Sunday after the Bushdance, saw some very keen people who hadn't gone to the dance turn up at Roo Point to learn some advance abseiling.

Michael Wood provided some excellent tutoring on how to prussik and abseil over knots, although why he wanted to get up and down the tree in such a fashion remains a mystery to me.

It was good to see those people who learned the basic on the tree to advance to the cliff. I'd like to thank all who came along.

Kén McCarron

## THINKING CATHOLIC

I dreamed death came the other night  
And Heaven's gates opened wide.  
With kindly grace an angel  
Ushered me inside.  
And there to my astonishment,  
Stood folks I'd known on earth.  
Some I'd judged and labelled unfit - of little worth.  
Indignant words rose to my lips  
But never were set free;  
For every face showed stunned surprise;  
No-one expected me!

Have you heard about a new liberal church?

They have four commandments, and six "do the best you can".

# FEATURE ARTICLE

## MT ASPIRING NATIONAL PARK - Rees and Dart Rivers:

During our holidays in New Zealand, Justin, Mark and myself spent two weeks in and around Mt Aspiring. The two walks we completed were simply inspiring and revealed the beauty of this rugged terrain. And yet these walks are within the capabilities of most members, with the tracks along valleys and comfortable huts. I will give a short account of the first trip, the Rees and Dart Rivers.

At the head of Lake Wakatipu is Glenorchy, about an hour from the tourist mecca of Queenstown. From here we caught a taxi to the Rees River and the track. We were accompanied by a 65 year old grandmother who had left her husband to look after the campervan in town.

The Rees valley is typical of the valleys in this region, with wide, flat plains, steep forested slopes and craggy, snow-capped peaks. The valley narrows and steepens at the headwaters of the river. We were also blessed with idyllic conditions, clear blue skies, etc., for a lot of the time. That first day relaxed us with superb views of Mt Earnslaw. For variety, one section entailed climbing through beech forest carpeted in moss. Camp that night was in Shelter Rock Hut above the tree-line with an evening panorama of rocky peaks.

The second morning took us through alpine grass and wildflowers to the Rees saddle, a low pass (1450m.) to Snowy Creek. We enjoyed three glorious hours on the pass, resting by small tarns (pools of water), soaking up the sun and scenery, and exploring. As Justin would say, "Magic!" This entire area is made up of schist, a layered, flaky rock, which is metamorphised sandstone and siltstone. It was formed under tremendous heat and pressure through the uplifting of the Southern Alps. It is a remarkable sight.

Following Snowy Creek downstream, we arrived at the Dart River and the hut at the junction. Our luxurious accommodation consisted of a pot-belly stove, tables, benches, sink and bunks with mattresses. Such conditions were found in most huts we stayed in. Day Three involved a walk upstream past the Dart Glacier to camp the night on Cascade Saddle.

The glacier was majestic, with its cirque enclosed by mountains and the ice exiting via the icefall. The cairned route followed the lower reaches of the glacier, which is hard to distinguish from the accumulation of dirt, gravel and rocks. Once on Cascade Saddle, we met the grandeur of Mt. Aspiring overlooking the Matukituki River. After a feed of scroggin, we wandered around the pass (1500m.), walked over to some ice fields and to Cascade Falls.

We camped out on an exposed, grassy shelf above a creek. That evening we experienced severe wind gusts, heavy rain and some hail to give us a taste of what it can be like in the mountains. Fortunately it cleared, not before Mark's bivvy bag became slightly soaked.

The dawn was crystal clear and we feasted on the views around us. Later we returned to the Dart Hut and continued our trip through the beech forests down the river. Camp was made at Cattle Flat, much to the delight of the local sandfly population. The walk down the Dart River brought more open flats to break the monotony of the beech. Crossing two rocky headlands brought us to Chinaman's Flat.

In the morning, we gradually left the mountains behind us as we entered grazing country. The last couple of days were quite restful as we pondered our experiences. Arriving at the locality of Paradise, we caught the taxi back to Glenorchy and a feed of ice cream and milk.

John Carter

M.B.S.

Change of address department:

Eugene Behan - 4/81 Sandford Street, St. Lucia, 4067.  
Phone 870 3791

Good to see visitors on their first club walk: Dan O'Leary, Mark Davidson, Cathy McDonnell, Dan Haberman, Sue Daunt, Toni Van Mens, Brian Harding, Glenn Hastings, James Wiseman, Bryan McMahon.

Some on their second walk: Marina Morgan, Paul Hodson, Paul Rebula, Lisa Scalia, Marie Calligan,

And some return from the past: Richard Kolarski and Andrew McFadzen.

Thank you all for the support.

Statistics from a recent throughwalk -

3 were over 40 years of age

3 " " 30 " "

1 was under 20 " "

These included - one dental student, one communications student, one doctor, one financial adviser, one barrister, one electrical engineer.

Unreliable sources close to Geoffrey Egert claim that he is soon hoping to become a Lebanese Navel Officer.

Ask Ken what he thinks of "Spicers".

Frances and Dave Mort proud parents of new baby boy. Sean David born Mater Hospital, 24th March, 1986, weighing in at 7lb. 14 ozs. (Reports that Daddy Dave and Justin are over the moon are quite correct. Uncle Justin is rapt).

Congratulations to Cathy and Mike on their recent engagement. (Hot off the Press that piece of news!)

All are invited to Margaret + Geoff's wedding at 3.30 pm.  
on Saturday 19<sup>th</sup> April - Our Lady of Graces, Carina

April 1986

JILALAN

Page 11

John Carter now in charge at Cunningham's Gap. B.C.B.C. will soon have their own men at the top of N.P.W.S.

Who was that masked man from Wynnum seen roving round the pubs in town?  
He wasn't that skinny when he left in June last year.

\*\*\*\*\*

GREEN MOUNTAINS  
KERRY - THE VALLEY OF JEWELS

There was an old sailor named Sinbad,  
Who told in his Arabic lore,  
Of a beautiful valley of diamonds,  
By a far-off ethereal shore.

I ne'er ever thought that this story  
Was more than a fairy-tale grand,  
Till I found my own valley of jewels  
Right here in my own sunny land.

Where mountains of emerald rise upward  
To a turquoise of blue up above,  
With pearly white clouds drifting over -  
Kerry, the valley I love!

There are amethyst pools in the river  
And cascades of opal-white foam,  
While red coral tropical flowers  
Bedower each settler's home.

The mornings in Kerry are sapphire,  
And beryl the tone of the noon,  
The evenings mellow to garnet,  
Then, Mother o' pearl comes the moon.

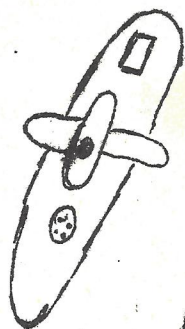
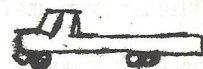
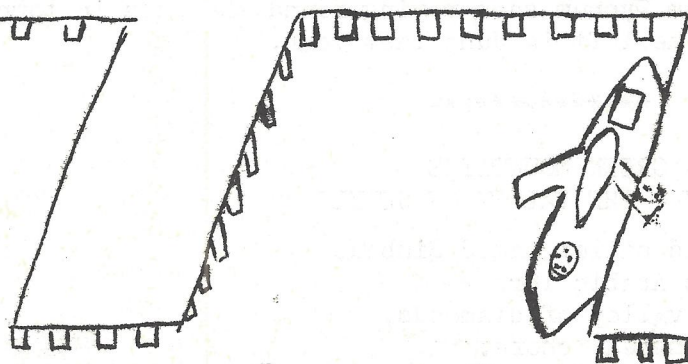
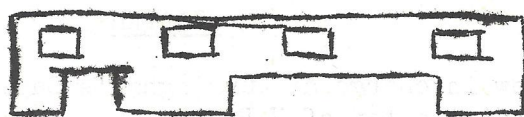
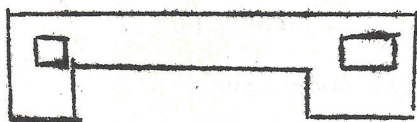
When people of Kerry foregather  
Each story they tell is a gem,  
And though some of the folks are "rough diamonds",  
They are REAL diamonds too, all of them.

The big thunderstorms of December,  
Black opal, with red lightning fire,  
Bring scenes of bejewelled splendour,  
Beyond heart's greatest desire.

But best of all is the sunset,  
All burning with ruby and gold,  
'Twill burn a bright path in my memory,  
Till I have grown feeble and old.

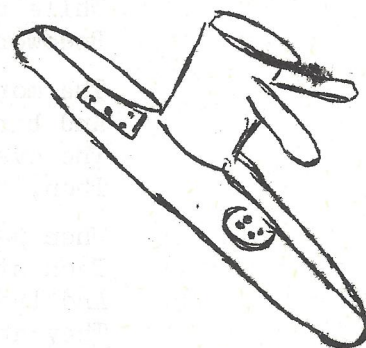
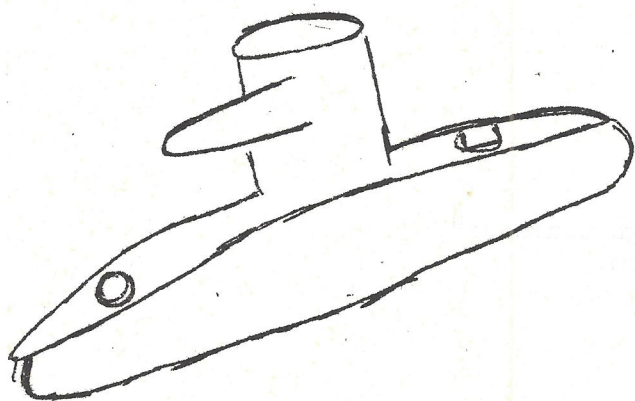
And then when the sunset has faded  
There follows a night made of jet,  
With stars blazing brighter than diamonds,  
(Oh! God, let me never forget!)

..... from "Green Mountains"  
by Bernard O'Reilly



SUBS

ARE NOW DUE IN.



IS YOURS IN DOCK.

## Halley's Comet

LEADER. GREG ENDICOTT  
APRIL 11th

## NIGHT WALK

One Advantage of being the Jilalan Printer is your trip articles make it on time.

With careful Planning + Great foresight your CLUB PLANNED THIS Viewing at the POINT OF HALLEY'S closest approach to THIS EARTH. So the THIRTY OF US CLIMB INTO SIX cars + Headed OFF. Cunninghams GAP was Reached at 10.30 PM and it did not take long to be UP and OFF. Into the Forrest. Torches on for THIS STARRY MOONLESS NIGHT. WE ZIGGED, WE ZAGGED, WE WALKED AND WE TALKED. PLODDING ON, one footstep after another. There was JUSTIN, keeping Toni + SUE Entertained. The bulk of the party I found Wandering ahead with Judy, Andrew, Dan and Gordon Leading, going around the Eastern Side of the Mountain, Bring Mario, Cathy, + Pauline with them. In + OUT OF Rainforest with these STARRY GAPS BETWEEN and reaching the first of "THE STEPS". Soon it was the "SADDLE", and a lollie break. Views of the Plains were GOOD, The Farm light at YOUR FEET, TRUCK LIGHTS MOVING ON the Road down the Gap, leading away TO Town + CITY LIGHTS, IN the Distance, and ABOVE, the STARRY EXPANSE OF THE HEAVENS. Lollies + Drinks all around, and Margie, her FIRST TIME WITH US APPRECIATING all the GOINGS ON. The FINAL ASSULT UP THE 100 STEPS TO East Peak! PACKS WERE DROPPED BY ALL. Out came the TRIPODS, LONG LENSES, FAST FILM, B.D'S. and the heads went SKYWARDS. ONLY TO FIND WE WERE STANDING IN A CLOUD.

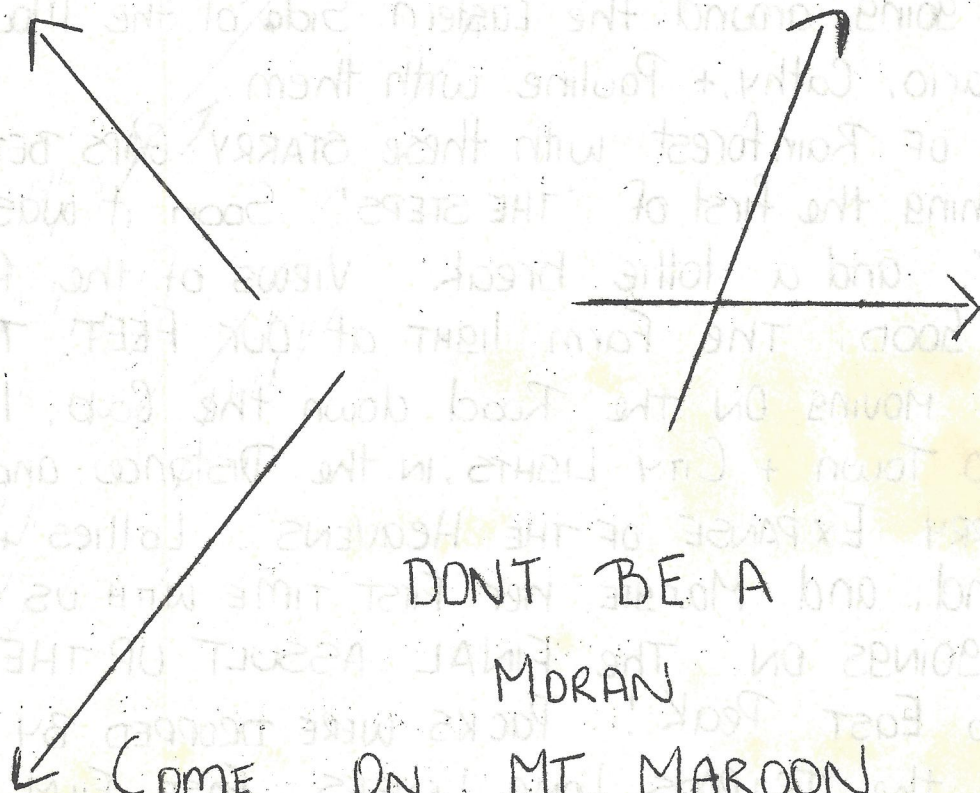
## Halley's Comet Cont.

Many thanks to all THOSE who came totalling THIRTY. Thanks to Those who rang me before the NIGHT AND CANCELLED their nominations. Finally good to SEE Newer faces. For some, their First point of contact with this club - hope we were at our best. and for others Their Second or Third Outing: NICE to SEE THIS INFUX, ESPECIALLY on my TRIPS.

Greg.

\*\*\*\*\*

MT Maroon - DAY WALK 27th April



Nathan NOSE the WEIGH!