



# JILALAN

MONTHLY CIRCULAR

OF THE

**BRISBANE CATHOLIC  
BUSHWALKING CLUB Inc.**

UNDER THE GUIDANCE OF OUR LADY OF THE WAY



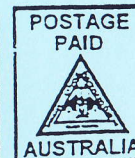
**OCTOBER 1998**

If undeliverable return to  
Brisbane Catholic Bushwalking Club Inc  
PO Box 151 Brisbane  
ALBERT ST QLD 4002

**JILALAN**

Print Post Approved  
PP409357/0022

**SURFACE  
MAIL**



**BRISBANE CATHOLIC BUSHWALKING CLUB INC.  
PO BOX 151, BRISBANE ALBERT STREET, QLD 4002**

**CONTACTS**

CHAPLAIN	Fr Edwin Nally	3350 3955
PRESIDENT	John Carter	3290 3621
VICE PRESIDENT	Trevor Kelly	3269 4795
TREASURER	Sue Tobin	3366 3193
SECRETARY	Justin Tobin	3366 3193
OUTINGS SECRETARY	Christine Harrison	07 5429 5494
MEMBERSHIP OFFICER	Carol Hall	3269 4795
SOCIAL SECRETARY	Gabriel Romaguera	3369 7330
TRAINING OFFICER	Greg Endicott	3351 4092
"JILALAN" EDITOR	Majella Robertson	3359 8311
ARTIST-IN-RESIDENCE	Iain Renton	3395 7665

For specific enquires, contact the Committee member (from above) concerned. For outings or socials, contact the leader shown in the calendar or article. Visitors - for general enquires contact Susan Tobin 3366 3193.

**JILALAN**

Please have all articles to Majella (10/100 Leckie Rd, Kedron 4031) by the 1st of the month. Articles, if on disk need to be submitted in RTF (Rich Text Format) with a hard copy included, otherwise a handwritten or typed copy will do.

**GENERAL MEETINGS**

Meetings are held on the 3rd Monday of every month, at 7.30 p.m (although they usually start about 15 minutes later). The location is *St Brigid's Parish Hall, Musgrave Rd, RED HILL*. VISITORS are always welcome.

**OUTINGS**

- Always read the Jilalan article to check the departure point, date and time.
- Departure of walks is usually either from the Old Windmill on Wickham Tee or at Sullivan & Nicolaides (134 Whitmore Street, Taringa - enter via the upper driveway and drive down to the upper level of the carpark). Check "Jilalan" or phone the leader to be certain.
- The Club will usually organise transport for each outing, but you must nominate in advance to the leader. Contacting someone else may lead to your nomination becoming "lost". Nominations should preferably be made by the Monday prior to the activity (Wednesday at the latest) so that transport etc. can be arranged. Note that nominations for some walks may close well in advance of this. Late nominations may not be accepted.
- Walkers are responsible for their transport to and from the departure point.
- Walks are rarely cancelled - if they are, all nominees will be notified. Should you change your mind and decide not to come to a club event, please notify the leader as soon as possible.

**EMERGENCY OFFICER**

If, within the hour prior to an outings' departure, you can't make it or you are running late, phone the number shown in the "Jilalan" for the Emergency Officer for that outing. If you have not returned from an outing by 9.00 p.m. your family may ring the Emergency Officer - but please don't panic.

**EQUIPMENT HIRE**

The Club has some tents and through-walk packs to hire to visitors and newer members. Borrowers are responsible for collecting and returning equipment, as well as making good any loss or damage over and above normal wear and tear. Hire rates - Packs \$10/weekend, Tents \$5.00 - Deposit of \$20 required.

**PERSONAL EQUIPMENT**

The Association requires that certain minimal basic equipment should be carried by all walkers on all trips. This should comprise the following - a first aid kit, a torch, a parka/raincoat, hat, shirt, 15+ (or suitable value), sun screen and at least 2 litres of water. Leaders may require that walkers carry other equipment. Advice of this will be given in "Jilalan" and/or by the leader.

**MANAGEMENT COMMITTEE**

All members are most welcome to observe the next meeting of the Management Committee. You are very welcome to attend the meeting but please contact the President beforehand. This means you can be advised of any change of date/venue. If you feel strongly about an issue, bring it along to the Committee Meeting and we'll put it on the agenda.

**WARNING**

**All persons, adult or child, member or visitor, undertake all activities of the Club at their own risk. The Club is not in a position to even state that all care will be taken.**

**CALENDAR OF CLUB EVENTS**

21	Meeting			
26-27	Club Hut	Nathan Tobin	3202 2690	B/C
26	Mt Ernest	Con Vink	3814 3545	D/W
27	Isolated Peak	Justin Tobin	3366 3193	D/W
Oct 4	Araucaria Cct	Chris Mc Caffery	3349 5730	D/W
9-11	Girraween	John Carter	3290 3621	B/C 40th Anniv.
17	Kangaroo Point	Greg Endicott	3351 4092	FMR
18	Minnages	Pat Lawton	3366 1956	D/W
19	Meeting			
23-25	Harry's Hut	Trevor Kelly	3269 4795	B/C
23-25	Cooloola Way	Patricia Kolarski	3341 7509	T/W
23-25	Cooloola Way	Christine Harrison	3378 0264	T/W
31- 1	Mt Warning	Chris Mc Caffery	3349 5730	O/W
Nov 7-8	Booloolumba Creek	Matthew Palmer	3279 4490	T/W
7-8	Booloolumba Creek	Majella Robertson	3359 8311	B/C
14	Progressive Dinner	Gabriel Romaguera	3369 7330	SOC
15	Coomera Crevice	Iain Renton	3395 7665	D/W
15	Metrogaine	Greg Endicott	3351 4092	S&T
19	Meeting			
21	<del>Burnett Ck Absell</del>			D/W
22	Watson Ck Falls			D/W
28	Westray Graves	Kerry Mulligan	3279 4490	D/W
28	Pt Lookout			D/W
Dec 5	Christmas Social	Gabriel Romaguera	3369 7330	SOC
12	Daves Creek Cct	Majella Robertson	3359 8311	D/W
12-13	Rat-a-tat			T/W Beginners
20	Canoe Brisbane River			Canoe
21	Meeting			
26	Boxing Day Walk			D/W
27				
Jan 1-3	Border Ranges			T/W
1-3	Border Ranges			B/C
9/10	<del>Box Forest</del>			
16/17	<del>Lower North</del>			D/W
18	Meeting			
23/24	<del>Warrior</del>			D/W
26	Stairway Falls			D/W
29-31	Broken heads			B/C
27				

**KEY - Walk Types**

D/W	Day Walk	1/2 DW	Half-day Walk
T/W	Through Walk	TRN	Training
O/N	Overnighter	FMR	Federation Mountain Rescue
B/C	Base Camp	SOC	SOC

**Key - Walk Gradings**

The BCBC is now using the following Walk Grading system currently used by the Brisbane Bushwalking Club.

1. Distance	2. Terrain	3. Fitness
Short	Under 10 km per day	1-3 <u>Easy</u> . Suitable for beginners
Medium	10-15 km per day	4-7 <u>Medium</u> . Reasonable fitness required
Long	15-20 km per day	8-10 <u>Hard</u> . Strenuous, fit walkers only
EXtra	Over 20 km per day	
Long		

## REPORTS

## President's Report

Prior to the commencement of October's general meeting, there will be an outings meeting at 7PM, to allow members to nominate walks for next year's calendar. Christine wants additional ideas to complete the calendar for 1999. It is also an opportunity to nominate as leader for walks. So have a think and come early. Leaders are also needed for walks later this year.

John

## Treasurer's Report

Balance as per 17/8/98	1 110 67
+ Receipts	499 00
	1 609 67
- Payments	534 36
	1 075 31
Balance as per 21/9/98	1 075 31
Term Deposit	1 453.94

## Outing's News

Remember, if you are interested in leading a walk please contact Christine (07 5429 5494). Leaders are reminded to contact Christine re the costing of walks and the emergency officer for their particular walk.

## URGENT!!!

Leaders are desperately needed for coming walks - remember if there are no leaders there can be no walks!!! Contact Christine NOW!

OUTINGS MEETING  
7PM MONDAY 19 OCTOBER  
BEFORE NEXT GENERAL MEETING  
AT RED HILL

## COMING WALKS

### Harry's Hut 23 - 25 October 1998 Base Camp

**Leader:** Trevor Kelly (3269 4795)  
**Time:** 7:00pm  
**Meet at:** 10 Townsend St. Brighton  
**Grade:** M33  
**Cost:** \$25:00  
**Emerg Off:** Dolans (3843 4116)

Day 1: 19km Harry's Hut to Wandii Waterhole  
Day 2: 17km Harry's Hut to Fig Tree Point  
Come along to the Coolooloolo Wilderness Base Camp at Harry's Hut. If you have a lilo bring it as well as your swimmers.  
Highlights include Scribbly Gum forests, wildflower and the chance to enjoy the comfort of being on a base camp.  
More details at the meeting.

### Coolooloolo Wilderness Trail 23 -25 October 1998 Throughwalk

**Leaders:** Christine Harrison  
(07 5429 5494)  
Patricia Kolarski  
(3341 7509)  
**Time:** TBA  
**Meet at:** Sullivan & Nicolaides  
**Grade:** M33  
**Cost:** \$25:00  
(includes camping fee)  
**Emerg. Off:** Dolans (3843 4116)

Coolooloolo National Park is on the south-central Queensland coast, east of Gympie. It provides an excellent wilderness trail through scribbly gum forest, wildflower plains and the low stony hills of the Noosa River's western catchment. An excellent time for the superb wildflower displays and a dip in the waterholes, one will be our overnight camping spot.  
Christine will be starting from East Mullen going South to Harry's Hut. Whilst Patricia will be going in the reverse direction, South to North. Most of the terrain is reasonably flat with a good track. Beginners will find this an easy throughwalk.  
Packs and tents can be hired from the Club or

perhaps share with someone to ease the load. Need some help or advise? Contact a committee member for advise to get you on the Coolooloolo Wilderness Trail. It's so easy - come along, all welcomed, the permit has been given.

### Mt Warning 31 October - 1st November Overnighter

**Leader:** Chris Mc Caffrey  
(3349 5730)  
**Time:** 1:00pm Saturday  
**Meet at:** Sullivan & Nicolaides  
**Grade:** S24  
**Cost:** \$15.00 (plus camping fee)  
**Emerg Off:** Dolans (3843 4116)

The eruption of the Mt Warning volcano would have been one of the biggest volcanic events in Australia in the last 200 million years. Mt Warning rises 1157m and because of its height and eastern location, is the first part of the Australian continent to receive the sun's rays at dawn. The mountain was named by Captain James Cook in May 1770 as he sailed up the coast. He used it as a reference point to the shoals and breakers off point danger.

Leaving Brisbane Saturday afternoon we will drive to Murwillumbah where we will camp overnight at the Mt Warning Caravan Park. Sunday morning we have a short drive to Breakfast Creek picnic area where we will start the walk.

We will follow a graded track that will take us to the summit of Mt Warning. Along the way we will pass some interesting vegetation including Flame Trees, Flooded Gums and the occasional Red Cedar. The forest opens up and as we get higher up, we should see some ferns and mosses and also Coachwood, Brush Box and Walnut Trees. We will lunch on the summit of Mt Warning and we should get some wonderful views from the summit.

The trip distance is approximately 8.8km return. This is an interesting area to visit so nominate to me at the meeting.

### Conondales Throughwalk 6 - 8 November 1998 Throughwalk

**Leader:** Matthew Palmer  
(3279 4490)  
**Time:** TBA  
**Meet at:** TBA  
**Grade:** M44  
**Cost:** \$20 Fuel and camping fees  
**Emerg Off:** Dolans (3843 4116)

The Conondales are a range of mountains situated behind the North Coast not far from the town of Kenilworth. Made up of rainforest and eucalyptus ridges the Conondales offer many great walk itineraries. The plan is to do a two day throughwalk probably walking up one creek and down another. More details at the meeting.

### Booloolumba Creek 6 - 8 November 1998 Base Camp

**Leader:** Majella Robertson  
(3359 8311)  
**Time:** 7:00pm  
**Meet at:** Sullivan & Nicolaides  
**Grade:** S23  
**Cost:** \$25:00  
**Emerg Off:** Dolans (3843 4116)

Booloolumba Creek is situated behind the North Coast and should be a great place to spend a summer's weekend. At this time I have not yet done the pre-outing but the plan is to head up to the camping grounds on Friday evening. There are toilets, reticulated water and BBQ's available. On Saturday I am hoping to do two short walks - The Gold Mine Circuit in the morning, a walk of about 3km which visits an old gold mine site. Following this we will walk to Booloolumba Falls and The Breadknife for lunch and a swim. On Sunday I would like to do the walk to Mt Allan. There is a fire tower on the summit that gives some great views of the surrounding area.

**Coomera Crevice**  
**15 November 1998**  
**Day Walk**

**Leader:** Iain Renton (3395 7665)  
**Time:** 8:00am  
**Meet at:** The Old Windmill  
 Wickham Tce  
**Grade:** M44  
**Cost:** \$12.00  
**Emerg Off:** Dolans (3843 4116)

It'll be the day after the Progressive Dinner, so we won't be doing anything too strenuous. We'll start by taking a bit of the Illinbah Circuit down to the Coomera River, then walking up the Coomera River up the gorge, perhaps as far as the falls at the end. Having looked down on the river from the now closed Coomera Circuit, I'm sure it'll be a quite dramatic location.

I haven't done the pre-outing yet but I assume there'll be a fair bit of rockhopping. It should be quite cool walking by the river. The most strenuous part will probably be the walk back up from the river to the car park (we'll be going back the same way we went in).

See you there.

**SOCIALS**

**Coffee Night**

Wednesday 28 October

7:30pm

Coffee Shop at Sunny Plaza (Big W side)

Mains Rd

Sunnybank

For further details contact Majella (3359 8311)

**Movie Night**

Tuesday 10 November

Please phone the answer machine (3393 5545) from the Sunday prior to the movie night. The movie, theatre and time will be given. Please hang up once you have heard the message. If for some reason you are unable to get through on the above number please contact Majella (3359 8311)

**"Progressive Dinner"**  
**Saturday 14 November 1998**

**Time:** 7pm  
**Venue:** TBA  
**Cost:** \$10:00  
 \$5:00 (if you bring a plate)

This year's theme for our annual progressive dinner is **"A Day at the Races"**. Come dressed for the occasion - as a jockey, a horse trainer, one of the "beautiful people" attending the races or perhaps you might like to come as a horse! What ever you like will be appropriate.

We are calling for volunteers to provide entertainment for the evening - so if you would like to sing a song, dance a jig, recite a poem or put on a "Red Faces" item, let us know so we can program you into the evening.

As yet we do not have a definite venue but will be able to let you know definitely at the October meeting. If you are unable to attend the meeting please ring Gabe or Majella for information.

We will be asking everyone to bring a plate of some sort for the evening - so decide what you would like to bring and let us know or alternatively give us a ring and we'll let you know what to bring. Remember this is our BIG social event of the year, so book it into your calendars and we shall see you there!!!

For information contact Majella (3359 8311) or Gabe (3369 7330)

**PAST OUTINGS**

**Logan's Ridge Overnighter**  
**1 -2 August 1998**  
**John Carter**

In the footsteps of Logan...

Eighteen members and visitors arrived at the base of Logan's Ridge by the 7am starting time on a cloudy morning, which at least meant pleasant temperatures during the day. We had come to remember the 170th anniversary of the first climb of Mt Barney by Captain Logan. He had been accompanied for part of the journey by Allan Cunningham and Charles Fraser. It was also the 20th anniversary of a similar climb by the club. Soon after the start the leading group saw a Wedge Tailed Eagle drinking at a farm dam before



↑The stunning bride escorted by her father & niece↑





↑The proud parents↑

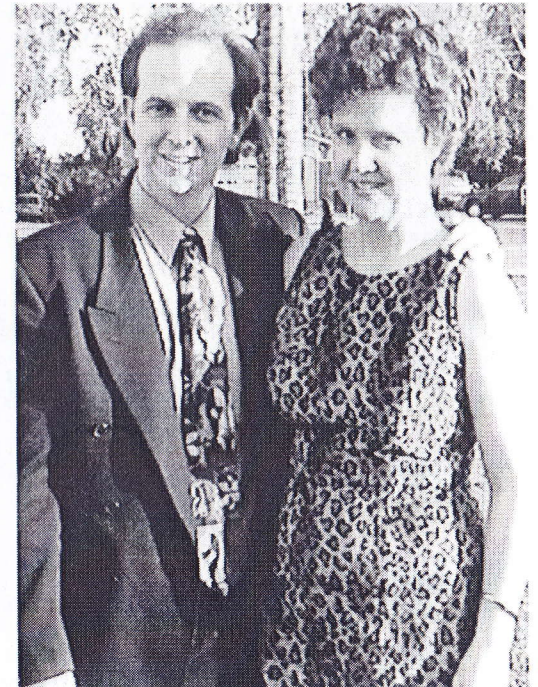


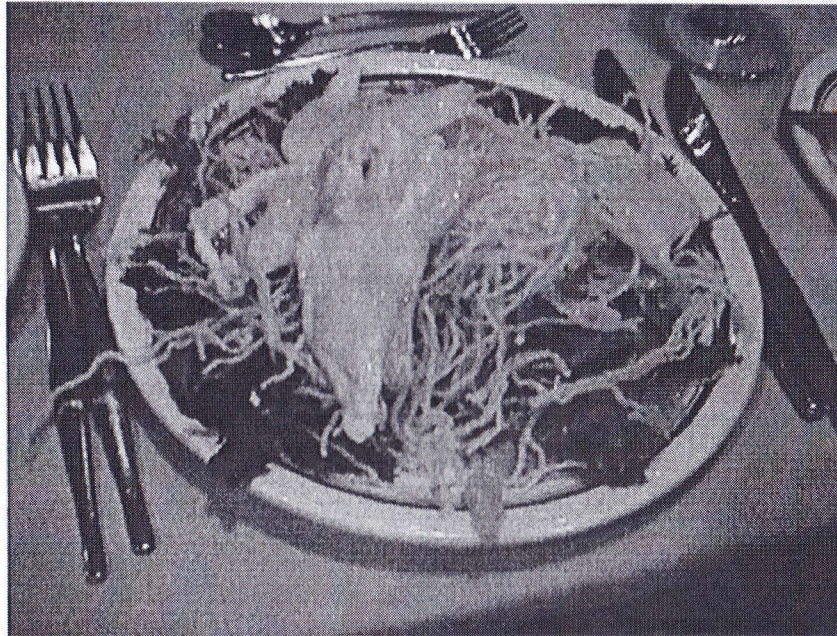
↑Two of the glamorous models in attendance↑



↑  
John's Pierre Cardan Suit &  
Tie \$969  
Lynn's Bolle Sunglasses \$355  
Joe's Country Road Outfit  
\$599

Kerry brought the rain God→  
with her. He was having an  
off day, the weather was fine





↑ many a tasty morsel was consumed in the sumptuous surrounds ↑



↑ The bride and groom cut the cake ↑  
which had been made superbly by Carols mother.

it flew away, which was very unusual.

We followed the ridge line for an hour until we reached the rock slopes, where we had a break. We quickly gained height as we scrambled over rocks and there were only a couple of instances where there was some difficulty experienced. At the main saddle we had morning tea and soaked in the views, which were quite good. One could almost touch North Ridge on the other side of Rocky Creek.

Near the summit, we decided to bypass the exposed final climb and contoured north along a ledge to a gully which led to the summit. The climb had taken six hours and we all appreciated lunch. Before we left, a group photo was taken. To save time, the group descended off East Peak via South-East Ridge. The descent took over four hours and a number of us arrived on the road in twilight. It was a big day.

After the walk some of us returned to Barney Lodge for a cuppa which was most appreciated. Thanks to Justin for being Tail-End-Charlie, for everyone for coming along and helping each other climb the mountain, especially John Brunott. The climbers were Majella, June, Anne, Maxine, Trevor, Michael, Matthew, Barry, Chris, Iain, Joe, John B, John, Justin, Russell (Ipswich Catholic) and two friends of Barry (who did very well).

### **Wilsons Peak Sunday 30th August Richard Kolarski**

All week it had been raining on and off and I had a few calls to see if the walk was still on. There was a rough standby plan if it did rain but luckily it wasn't necessary. The day dawned clear with only a few clouds. The six of us, Patricia, Anne, Paul, June, Michael and myself met at Gail's and after a short stop to fill up with petrol, drove on to Boonah. Wilsons Peak stood out clearly as we drove on to Teviots Gap. We stopped at the Gap to admire the falls which were impressive after the recent rain. Anne left her car there and we crammed into the one car to do the short car shuttle so that we could go up the western side and down the northern side of Wilsons Peak.

The walk up the western ridge follows the rabbit fence and is quite easy initially as we follow the service road. However the terrain soon became too steep for vehicles and the road turned into a loose, slippery, narrow walking track. In some places we had to drag ourselves up by holding on

to the rabbit fence. However, we all exercised extra caution when one of the group stated that a bushwalker in one of the other clubs had amputated a finger on a rabbit fence recently. We stopped frequently to catch our breath and admire the views.

At the base of the cliff we had a short stop for morning tea. We then contoured round to the left and soon came to the break in the cliff which led to the summit. June almost pulled out at that stage as she thought she wouldn't be able to do it. But she wasn't allowed to quit, and, with many helping hands, we finally all stood at the summit. Another 100% success rate to add to the walks I had led up the Cougals and Boyd's Butte! Coming down the north ridge was also steep and very loose. The old unmaintained rabbit fence here had been recently pulled down so there were no hand holds available. A few of the group had undignified falls onto their posterior but only their pride was hurt. The last section of the walk went through eucalypt forest and this was a pleasant change after the rainforest. A recent fire through this area made the walking track stand out clearly and we made good time. We arrived back at the car about 1:30pm and some of the group finally had their lunch. The rest of the afternoon was spent doing a car circuit around Wilsons Peak by going back via the White Swamp road and having a coffee stop in Boonah.

I would like to thank Anne for using her car and to all the others for making this a very enjoyable walk.

### **Rainfall Worriers Part One: North Queensland Extended Trip Richard Kolarski**

September School Holidays and a chance to head away from Brisbane for an extended trip to North Queensland. I had worked for over ten years on and off in the northern half of the state and had been a member of the Mackay and Cairns Bushwalking Clubs. Among the many walks I had done, Mt. Dalrymple in the Eungella Range, west of Mackay, was one of my favourites. Besides being almost guaranteed to see platypus in the wild at Broken River, it involved a 4 to 5 hour walk off the beaten track, through virgin tropical rainforest with a superb 360 degree view from a large rocky slab at the summit. I was more than happy to head off north and lead a walk in

this pristine area.

John, June, Matthew, Kerry, Patricia and I had arranged to meet at the Broken River camping area on Monday, the 21st of September. Unfortunately, you can not have a rainforest without rain, and the north had had record falls. An alternative campground at Broken River had been closed after being covered in a layer of silt from flooding about a month previously, and it was still raining! Though it was raining on top of the range, it was only overcast in the valley, as Patricia and I drove up to meet the others. The other four looked a bit waterlogged in their campsites and I don't think anyone was keen to do a two day walk in the rain with no views. After some discussion we decided to do a walk in Finch Hatton Gorge instead. (Finch Hatton was an early settler there and the brother of the real-life character played by Robert Redford in the movie "Out of Africa".)

We thus drove down the range and into the picnic area of Finch Hatton Gorge. It had been over 12 years since I had walked along the Gorge to see the waterfalls and the changes were very evident. One of the walks which led to a waterfall at which there had been several accidents, (including yours truly), was no longer graded or marked. The graded track now only went to the first two falls, and this track had been substantially upgraded with steps, railings and boardwalks.

After donning our day packs and rain gear we set off. About a kilometre down the track we took the side-track to Araluen Falls where a few hardy people were having a swim. After the rains, the falls were in full force with the water thundering down. Having taken the obligatory photos, we continued up the Gorge and arrived at Wheel of Fire Falls which were even more spectacular. We stopped here for morning tea and a short scramble up the rocks to get an even better view of the falls. Then the pleasant walk back to the picnic area where we had our lunch and naturally talked about the weather. Patricia and I had other commitments and would not be able to go with the others to climb up Mt Bartle Frere, the other major walk planned for the holidays.

As we did not get to walk up Mt Dalrymple this time, I'm planning another trip for next year. Anyone interested?

## OTHER ITEMS OF INTEREST

### A note on Killarney Glen...

The following is an extract from a letter sent to the club from the Principal Solicitor for the Australian Government Solicitor regarding Killarney Glen.

... I am instructed to advise that there is no general Commonwealth permission for the public to enter Killarney Glen or any other part of the Land Warfare Centre. I must advise that unauthorised access of this nature constitutes trespass. ...

### A note from the Department of Environment...

#### ...regarding a change to procedures for issuing camping permits...

In early October, the three self-registration camping permit stands at Mt Barney National Park will be converted to information stands and there will no longer be a self-registration camping permit facility for this park. All camping permits will now be issued by the rangers at the Boonah office.

#### ...regarding the removal of Mt Chinghee Plane Wreck...

In late August, the wreckage of the plane which crashed in Mt Chinghee National Park in May was removed. This was done as a result of experience in Lamington and several other national parks, where serious management problems have resulted from plane wrecks attracting inexperienced walkers. This has resulted in recurrent search and rescue problems and the wreck sites becoming foci of environmental degradation.

For further information on these matters see the secretary who has a copy of the relevant letters.

### Auction at October Meeting...

At the October general meeting a number of old "Hey Bob" magazines will be auctioned. These are of historic significance and would make a welcome addition to anyone's library. So come prepared to make a bid and these wonderful collectors item may be yours.

For further information contact John Carter (3290 3621)

### Membership List...

Christine and Cliff have moved house. Their new address and phone number is...

7 Chiltern Place  
Sandstone Point  
QLD 4511  
PH: 07 5429 5494

### STOP PRESS!!! STOP PRESS!!!

Louise and Russell Jones are the proud parents of a new baby girl, Jessica, born September 25th at 5:40pm.  
Congratulations!!!

### The Carol and Trevor Souvenir Wedding Gala Liftout...

Finally Lady Di has been knocked off the front page of all the glossy magazines by the joyous news of Carol and Trevor's Betrothal. Free in October's Magazine! Don't miss out! Get your copy now as it will one day be a collectors item!

### A note of thanks...

Thank you to all who contributed to this month's magazine. A special thank you for getting your articles to me by the earlier deadline.  
Happy reading!



UP BEHIND KILLARNEY